

Thank You!

For purchasing a MediProducts standalone battery backup unit. We are certain you can now be at ease knowing that your most important equipment has the backup protection it needs. This quick start guide will help get your new standalone unit ready as soon as possible.

1 Unpack Shipment

Remove each item from the pallet. Each item will weigh LESS than 80 lbs.



2 Remove Battery Box Covers

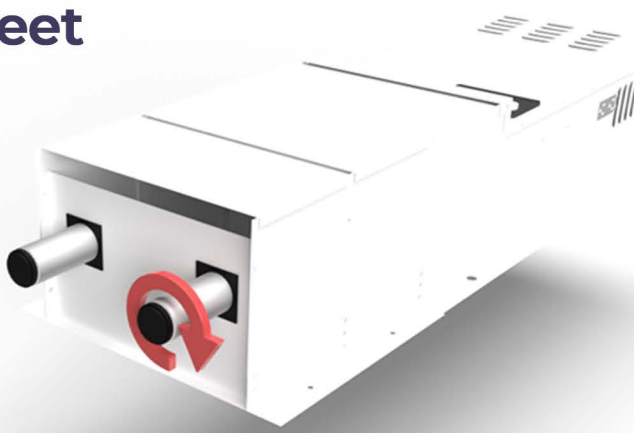
Remove the (2) 1/4" hex screws from each battery box cover and remove each cover from the system.

Note:
You will find the **INSTALLATION GUIDE** and **ALL HARDWARE** inside the upper battery box compartment marked "Hardware Enclosed"



3 Install Feet

Screw each foot onto the bottom of the system.



4 System Startup

Stand the system up on its feet, leaning the system against the wall. Then mount the system to the wall using the wall anchors supplied

Note:
Refer to full install guide for further detailed instructions



5 Install Batteries

Batteries should slide in, with the terminals facing you and the **RED** terminal at the right side



6 Install Cables

Fasten the battery cables to the batteries.

Note:
Check the install instructions for 12, 24 and 48 volt battery cable configurations.



7 Reinstall Covers

Reinstall the battery box covers using the same 1/4" screws that were removed earlier.



8 System Startup

Be sure the **POWER LIGHT**, **INVERTER LIGHT**, and **CHARGER LIGHT** are ALL on

Refer to the procedures listed in the user operating and testing guide for commissioning, using and testing the system.



Complete!

Your MediProducts standalone battery backup unit is fully installed and ready to protect your most valuable assets. If you're having any trouble refer to the full-length installation guide or call us toll-free at: 1-800-765-3237 Once again, we thank you for choosing MediProducts.