

8-Step Easy Start Guide

Thank you for purchasing a MediProducts Standalone battery backup system!

We are certain you will now be at ease knowing that your most valuable equipment has the protection it needs. This quick start guide will assist you in getting your standalone system ready to deploy as soon as possible

1 Unpack Shipment

Remove each item from the pallet. Each item will weigh LESS than 80 lbs.

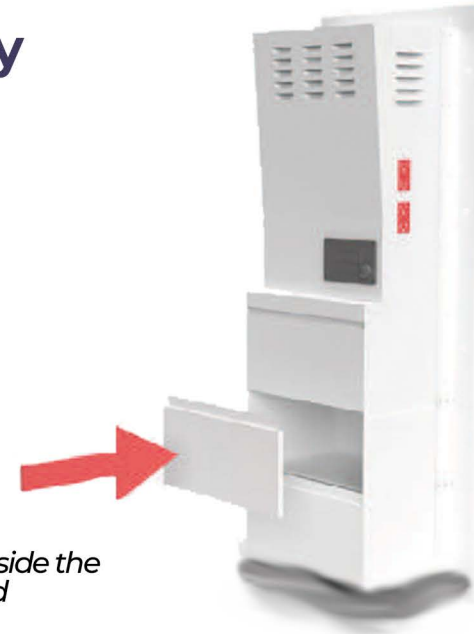


2 Remove Battery Box Covers

Remove the (2) 1/4" hex screws from each battery box cover and remove each cover from the system.

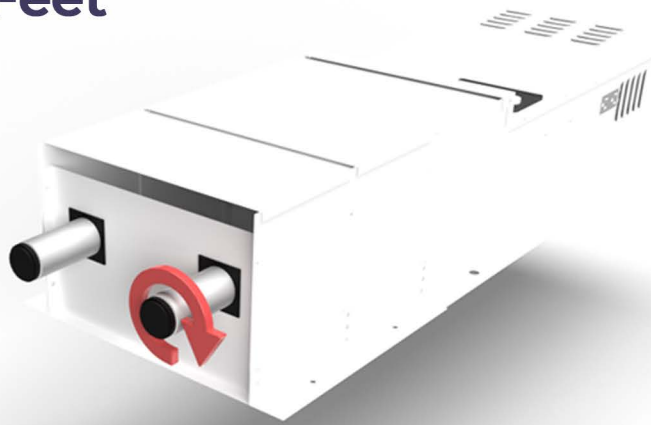
Note:

You will find the installation guide and all hardware necessary for install inside the upper battery box compartment marked "Hardware Enclosed"



3 Install Feet

Screw each foot onto the bottom of the system.



4 Wall Mount System

Stand the system up on its feet, leaning the system against the wall. Then mount the system to the wall using the wall anchors supplied

Note:

Refer to full install guide for further detailed instructions



8-Step Easy Start Guide

5 Install Batteries

Batteries should slide in, with the terminals facing you and the **Red** terminal on the right side of the user



6 Install Cables

Carefully fasten the battery cables to the battery in the correct order.

Use **Black** cables for the **Black**, negative terminals.

Use **Red** cables to connect **Red**, positive terminals.

Note:

Please refer the full-length install instructions for proper 12, 24 and 48 volt battery cable configurations. (12-volt orientation pictured)



7 Reinstall Covers

Reinstall the battery box covers using the same **1/4" screws** that were removed earlier.



8 System Startup

All Systems: Plug Unit into dedicated power outlet

V-Series Controller:

Turn control switch to the **"On"** Position. Both **"Mains On"** and **"Inverter On"** indicators should illuminate. Charging indicator may vary depending on current level of charge.



T-Series Controller:

Turn control switch to the **"Auto/Invert"** Position. **"Line In"** indicator light should also illuminate at the same time.

Note:

Refer to the procedures listed in the user operating and testing guide for commissioning, using and testing the system.



Complete!

Your MediProducts standalone battery backup unit is fully installed and ready to protect your most valuable assets. If you're having any trouble refer to the full-length installation guide or call us toll-free at: 1-800-765-3237. Once again, we thank you for choosing MediProducts.